



A fresh approach to pharmacometric modeling.

KIWI – a cloud-based interface to NONMEM – was developed for scientists by scientists to assist in streamlining the model development process. While pharmacometricians turn biology into math, KIWI turns chaos into dependability.

Why KIWI?

- Enhances collaboration among an entire department or company
- Offers multi-user 24/7 secure access
- Provides validated, reliable organization and processing of information
- Minimizes need for IT support
- Streamlines workflow through an intuitive user interface
- Offers point and click access to model development
- Provides searchable framework for regulatory traceability
- Allows more “think time” for scientists
- Evolves with Pharma of the Future

Multiple post-processing tools for:

- Generating NONMEM result tables
- Computing summary statistics of NONMEM results
- Generating customized graphs
- Facilitating summarization of covariate searches
- Comparing parameter estimates across models
- Flagging the critical path of model development
- Exporting formatted/validated report-ready figures and tables

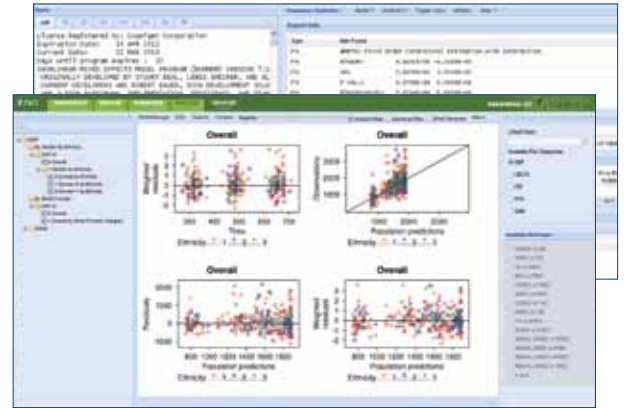


KIWI is ready. Are you?

- Queue a large number of jobs to run in a batch process
- Submit parallel NONMEM runs (if a multiple processor and licensing option is selected)
- Receive email notifications when each NONMEM run starts and completes
- Evaluate whether a NONMEM job is in a loop and needs to be discontinued
- Receive 100GB storage (expandable as needed)
- Maintain security and confidentiality of data and analysis results
- Receive reliable backup to ensure that data are secure and readily available

Do more with KIWI.

- Organize workspace in an access-controlled, workflow-inspired directory structure
- Create control streams with syntax highlighting
- Check control streams' meta-information prior to submission
- Review run queue
- Review NONMEM results and all output files
- Create tables for individual models and dynamic comparison of models
- Compare parameter estimates across models dynamically
- Highlight informational and error messages from a NONMEM report file
- Track parameter meta-information for parameter labels, definition of standard or customized variability models, and variable types (parameters vs. continuous or categorical covariates)
- Automatically generate summary statistics of precision, magnitude of variability, correlation, and parametric confidence intervals
- Automatically create p-value tables from covariate models
- Run GAM analysis
- Create validated R-based diagnostic plots including goodness-of-fit plots, eta-distribution plots, delta plots, individual predictive overlay plots, and visual predictive check plots
- Access multiple model evaluation methods, including bootstrapping and visual predictive check interfacing with PsN
- Export Word and HTML tables and diagnostic graphs at the click of a button for reports or incorporation into presentations
- Log and store runs with backend database
- Ensure files will not be accidentally overwritten or lost, and can be easily identified by file name or unique run number



To learn more about licensing KIWI, contact Cognigen at +1.716.633.3463.